

CHAMOT

Recombinant Human FGF-21

CM110-5HP
CM110-20HP
CM110-100HP
CM110-500HP
CM110-1000HP



CHAMOT

喬默生物技術(上海)有限公司
CHAMOT BIOTECHNOLOGY CO., LTD.

CONTENT

1 产品简介

2 产品组成

3 产品储存

4 产品使用

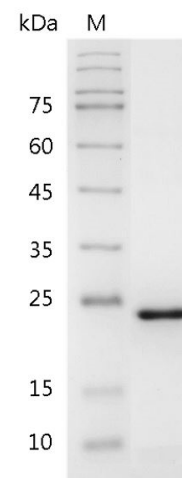
Recombinant Human FGF-21(Fibroblast growth factor-21)

编号:	CM110-5HP CM110-20HP CM110-100HP CM110-500HP CM110-1000HP	规格:	5 µg 20 µg 100 µg 500 µg 1 mg
类别:	重组蛋白	应用:	Functional Assay

产品简介

描述: FGF-21 is a member of the fibroblast growth factor (FGF) family. FGF family members possess broad mitogenic and cell survival activities, and are involved in a variety of biological processes, including embryonic development, cell growth, morphogenesis, tissue repair, tumor growth and invasion. FGF-21 is produced by hepatocytes in response to free fatty acid (FFA) stimulation of a PPARα/RXR dimeric complex. This situation occurs clinically during starvation, or following the ingestion of a high-fat/low-carbohydrate diet. Upon FGF-21 secretion, white adipose tissue is induced to release FFAs from triglyceride stores. Once FFAs reach hepatocytes, they are oxidized and reduced to acetyl-CoA.

来源: *Escherichia coli*
纯度: >98% as determined by SDS-PAGE. Ni-NTA chromatography.
生物学活性: Measure by its ability to induce proliferation in BaF3 cells transfected with human FGFR11c. The ED₅₀ for this effect is < 0.4 µg/mL.
内毒素检测: < 0.1 EU per 1 µg of the protein by the LAL method.



SDS-PAGE analysis of recombinant human FGF-21

蛋白序列: MHPIPDSSPLLQFGGQVRQRYLYTDD
 AQQTEAHLEIREDDGTGGAADQSPE
 LLQLKALKPGVIQILGVKTSRFLCQRP
 DGALYGSLHFDPEACSFRELLLEDGYN
 VYQSEAHGLPLHLPGNKSPHRDPAPR
 GPARFLPLPGLPPALPEPPGILAPQPP
 DVGSSDPLSMVGPSQGRSPSYAS
 with polyhistidine tag at the C-terminus

产品组成

成分: 从含有 1X PBS, pH 8.0 溶液中冻干的蛋白质.

产品储存/运输

产品形式	储存温度	储存时间
冻干粉	-20℃至-80℃	自收到之日起1年
重悬液 (初始)	2℃至8℃	不超过1周
重悬液 (经稀释)	-20℃至-80℃	3到6个月

运输方式: 蓝冰

产品使用

- 1、开盖前，建议3000-3500rpm离心5min。
- 2、推荐使用无菌水重悬冻干粉，溶液浓度不低于100μg/mL，不高于1mg/mL，并室温静置至少20min以充分溶解。勿涡旋剧烈振荡。
- 3、重悬后的溶液，2-8℃无菌保存不超过1周。
- 4、如需长期保存，推荐使用无菌的含载体蛋白（如0.1%BSA、10%FBS 或5%HSA）的溶液进一步稀释（不低于10ug/mL）后分装保存，-20℃至-80℃无菌保存3到6个月。无血清实验需求时，可更换为 5%海藻糖溶液作为载体。避免反复冻融。

WB= Western Blot; IP= Immunoprecipitation; IF= Immunofluorescence; IHC= Immunohistochemistry;
 FACS= Fluorescence activated Cell Sorting; FA= Functional Assay